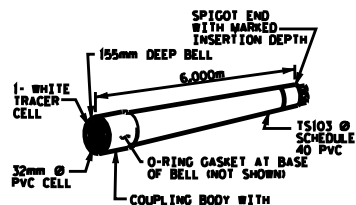
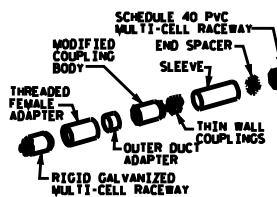


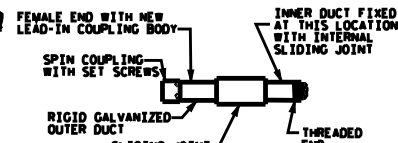
RIGID GALVANIZED (RGC) MULTI-CELL RACEWAY



SCHEDULE 40 PVC MULTI-CELL RACEWAY



TRANSITION ADAPTER



EXPANSION JOINT FITTING

DETAIL "D"

TS103 MULTI-CELL COMPONENTS

NOTES

THE CONTRACTOR SHALL BE RESPONSIBLE FOR DETERMINING THE TOTAL QUANTITY OF CONDUIT NEEDED TO COMPLETE THE WORK AND THAT THE CONDUIT(S) ARE PLACED AT THE NOTED DIMENSION AND ABOVE THE BOTTOM OF THE GIRDER.

THE INSTALLATION OF THE CONDUIT SYSTEM SHALL BE PAID FOR AS LUMP SUM. THE PRICE SHALL INCLUDE ALL CONDUIT, HANGERS, STABILIZERS, EXPANSION JOINTS, CONCRETE INSERTS, PVC SLEEVES AND ALL NECESSARY HARDWARE TO COMPLETE THE WORK.

THE CONTRACTOR SHALL FIELD VERIFY THAT THE CONDUIT SYSTEM IS NOT IN CONFLICT WITH THE GUARDRAIL POSTS.

SEE DETAIL "C" FOR HANGER ASSEMBLY INSTALLATION.

INSTALL SLEEVES PARALLEL TO GIRDERS. SEE DETAIL "B" FOR SLEEVE INSTALLATION.

PROVIDE TRANSITION ADAPTER (AND EXPANSION JOINT) FOR CONDUIT AT END BENT 1 (AND END BENT 2).

INSTALL STABILIZER'S MIDWAY BETWEEN DECK EXPANSION JOINTS. STABILIZERS CAN NOT BE USED INSTEAD OF HANGER ASSEMBLY.

INSTALL EXPANSION JOINTS AT BENT 1, BENT 2, BENT 3, AND BENT 4.

THE CONCRETE SCREW INSERT SHALL HAVE A ROD SIZE OF 15.875mm AND A PULL FORCE OF 500 kN.

FOR ELECTRICAL CONDUIT SYSTEM, SEE SPECIAL PROVISIONS.

DETAIL "A"

DETAIL "B"

PVC SLEEVE INSTALLATION & RGC/PVC ADAPTER AT BACKWALL.

DETAIL "C"

HANGER ASSEMBLY

CONDUIT LAYOUT

DETAIL "E"

STABILIZER

PROJECT NO. _____

COUNTY _____

STATION _____

SHEET _____ OF _____

USE .0014 X SCALE
FOR PE SEAL

STATE OF NORTH CAROLINA
DEPARTMENT OF TRANSPORTATION
STANDARD
ELECTRICAL CONDUIT SYSTEM DETAILS

VIEW "A-A"

VIEW "B-B"

VIEW "C-C"

DETAIL "F"

DEFLECTION COUPLER

ELECTRIC CONDUIT DETAILS

ASSEMBLED BY : _____ DATE : _____
CHECKED BY : _____ DATE : _____
DRAWN BY : REV 2-4-03 DATE : 11/2/09
CHECKED BY: REV 2-4-03

REVISIONS						SHEET NO.
NO.	BY	DATE	NO.	BY	DATE	
1			2			1

STD. NO. ECSISM